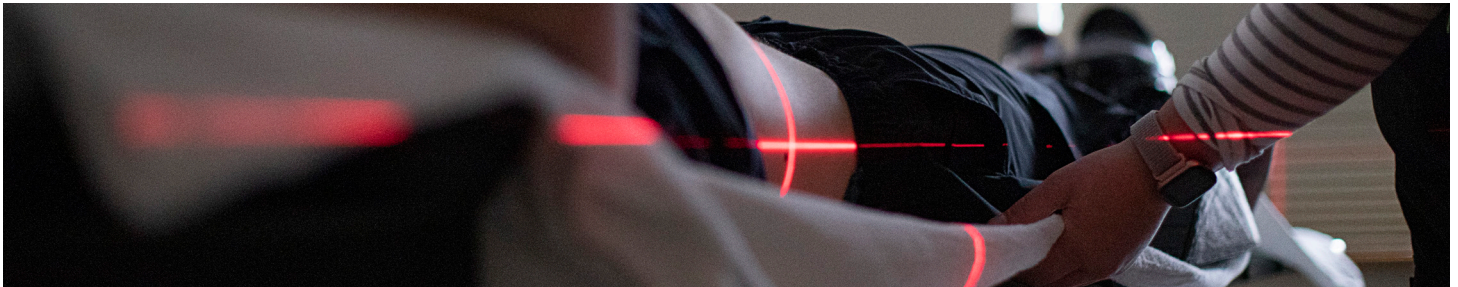


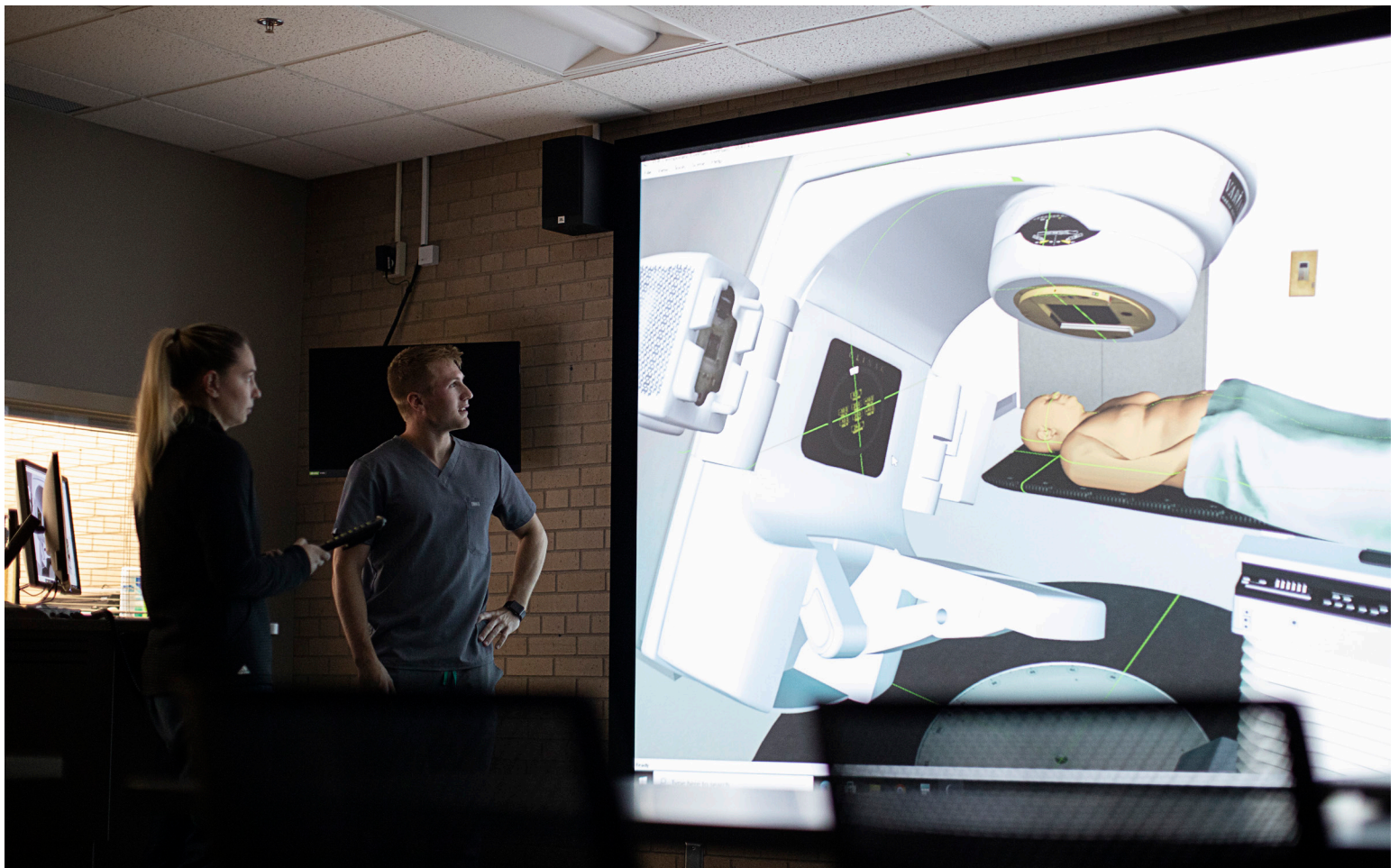
ASSOCIATE OF SCIENCE IN RADIATION THERAPY



Sample Schedule

Trimester 1		Credits
ANP-1000	General Education Requirement: Essentials of Human Anatomy & Physiology	3
MTH-1000	General Education Requirement: Foundations of Mathematics	4
ENG-1001	General Education Requirement: English Composition	3
RTH-1100	Introduction to Radiation Therapy	2
MED-1000	Medical Terminology	1
INCR-1001*	Foundations of Integrative Care	1
		14
Trimester 2		
RTH-1110	Radiologic Physics	3
RTH-1115	Sectional Anatomy	3
PHY-1000	General Education Requirement: General Physics	3
HPC-1002	General Education Requirement: The Art of Persuasion OR	
HPC-3001	Communication Skills for Health Professionals	3
		12
Trimester 3		
RTH-1120	Radiation Therapy Physics/Quality Management	3
RTH-1150	Treatment Planning 1 (Lecture/Lab) I	3
RTH-1130	Radiation Protection/Radiobiology I	3
HPC-3002	Bioethics	3
		12
Trimester 4		
RTH-2135	Principles and Practices 1	3
RTH-2220	Treatment Planning 2	3
RTH-2230	Building Clinical Skills (Lecture/Lab)	3
SOC-1001	General Education Requirement-Sociology OR	
SOC-1006	Sex and Gender	3
ANT-1000	General Education Requirement: Culture and Health OR	
PSY-1000	Health Psychology	4
		16

Sample Schedule continued on back



Sample Schedule

Trimester 5		Credits
RTH-2240	Principles and Practices of Radiation Therapy 2 (Lecture/Lab)	3
RTH-2280	Comprehensive Review	3
PSY-1001	General Psychology	3
RTH-2201	Computer Literacy and Research Methodology in Radiation Oncology	1
HPC-3720	Critical Thinking for Health Professionals OR	
HPC-3100	History of Health Care	3
		13
Trimester 6**		
RTH-2290***	Clinical Training	6
		6
Trimester 7		
RTH-3291***	Clinical Training	6
		6
Program credits		
General Education		32
Program Specific****		35
Clinical Training		12
TOTAL CREDITS		79

*The Foundations of Integrative Care course is a free 1 credit course for our students

**Students must complete a BLS course prior to Trimester 6 – offered at NWHSU BLS-1000

***RTH-2290 & RTH-3291-Clinical training is 1440 hours total; approximately 9 months.

****Program specific courses sequenced according to prerequisite requirements.